



# integrative acupuncture

## The Australian Society of Acupuncture Physiotherapists presents a work shop with Paula Raymond-Yacoub

Oriental medicine is replete with theoretical filters that are applied to understand disharmony. The trouble is that when we have a patient in front of us, these filters and their associated templates often don't seem to fit. Through Integrative Acupuncture's simplified methodology based primarily on *yin yang* we can develop treatment strategies that are not reliant on pulse diagnosis.

Pulse findings are certainly useful but we must remember the classical saying 'the pulse was good but the patient died'. A tree can be struggling for along time before changes are seen in the leaves and branches – the pulse is analogous to the branches. The hara and meridians offer a more immediate reflection of *yin yang* status. Pulse skills if you have them, perhaps should be applied as a confirmation, rather than the primary diagnostic indicator.

Integrative Acupuncture aims to support the root or core energy, the body's innate healing ability. In this two day work shop we will keep going back to the basics of *yin yang* balance, and the domino effect seen in the body when these energies begin to not work harmoniously.

This workshop will comprise some theory but will be primarily practice focused.

In this workshop we will aim to:

- reinforce this simplified methodology
- enhance our palpation skills of the skin, hara and meridians
- refine our 'hands on' skills of touch, needling and moxibustion
- enhancing our intention through mindfulness, presence and breath
- integrating our manual therapy skills with precise needling

The minimal requirement to attend this workshop is completion level 1 TCM or Integrative Acupuncture. Those who have done more advanced training are encouraged to cultivate an attitude of 'Zen Mind Beginners Mind' if attending.

**When:** Saturday and Sunday 25 and 26 February 2012

**Where:** Integrative Acupuncture Clinic – 1/22 Fawcett St Brunswick Heads NSW 2483

**Time:** 9.00 am to 5.00 pm on Saturday

9.00 am to 4.00 pm on Sunday

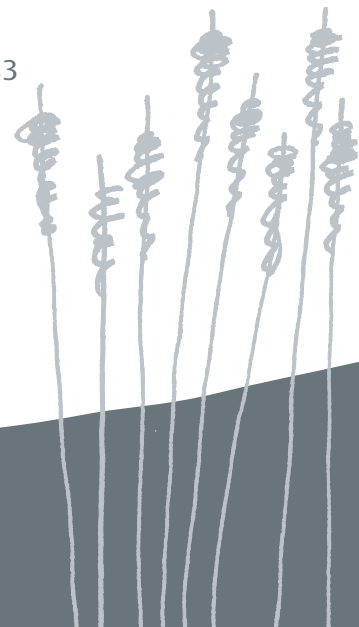
**Cost:** \$350 for ASAP members or \$400 for non-ASAP

Numbers are strictly limited so please enroll early to ensure a place

Morning and afternoon tea will be provided, lunch venues are accessed easily by foot.

Enquiries: Paula Raymond-Yacoub – [paula@integrativeacupuncture.com.au](mailto:paula@integrativeacupuncture.com.au)

More Information is available at [www.integrativeacupuncture.com.au](http://www.integrativeacupuncture.com.au)





# integrative acupuncture



**The Australian Society of Acupuncture Physiotherapists  
presents a work shop with Paula Raymond-Yacoub**

## **Course Enrolment**

### **Method 1**

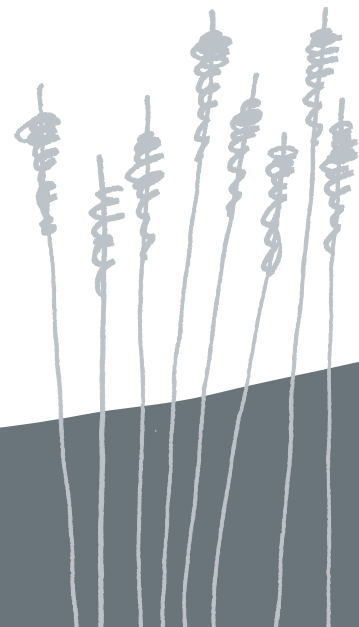
Send a cheque to ASAP C/O SWR Physiotherapy Clinic  
Crn Short & Orara Streets, South West Rocks NSW 2431  
Detail name, email and mobile phone number

### **Method 2**

Direct deposit to: Holiday Coast Credit Union,  
Account Name: ASAP  
BSB: 8020214 Acc No: 75161  
Identify yourself by name  
Submit receipt number by email to [swrphysio@tsn.cc](mailto:swrphysio@tsn.cc) with your name, email and mobile phone number.

**Life Membership of ASAP is only \$50 so consider joining.**  
Membership is restricted to physiotherapists.

Please do not assume attendance until you have paid and received confirmation!



Enquiries: Paula Raymond-Yacoub – [paula@integrativeacupuncture.com.au](mailto:paula@integrativeacupuncture.com.au)  
More Information is available at [www.integrativeacupuncture.com.au](http://www.integrativeacupuncture.com.au)